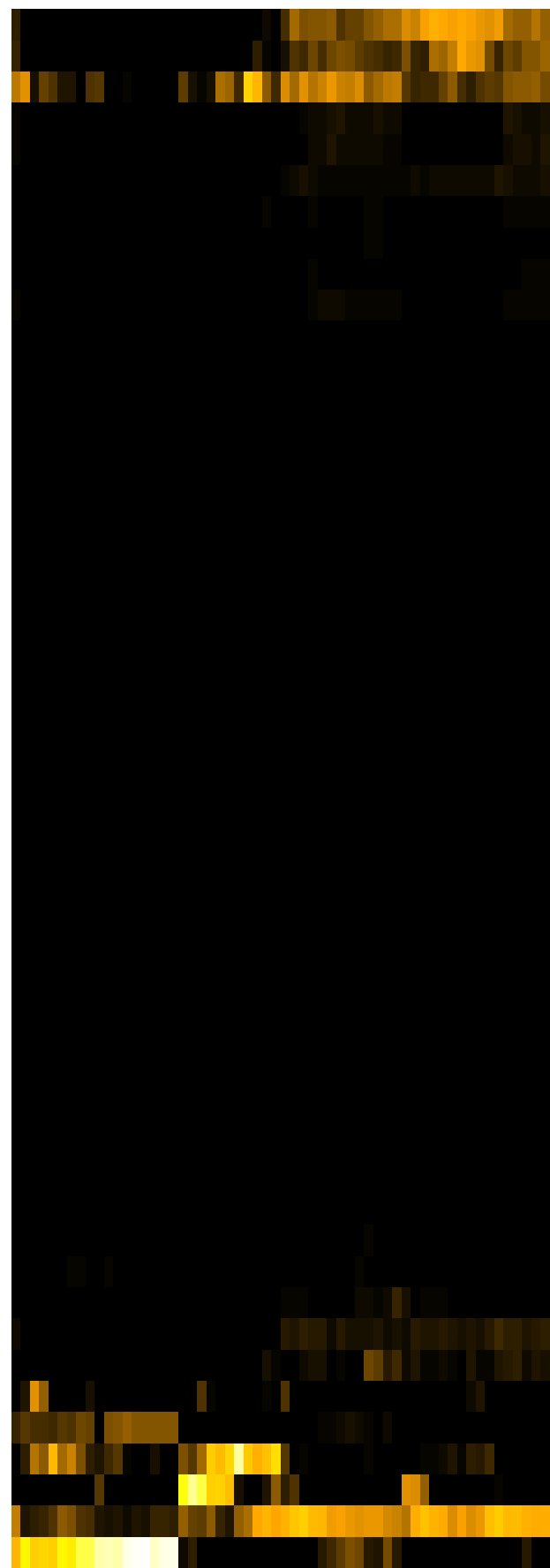
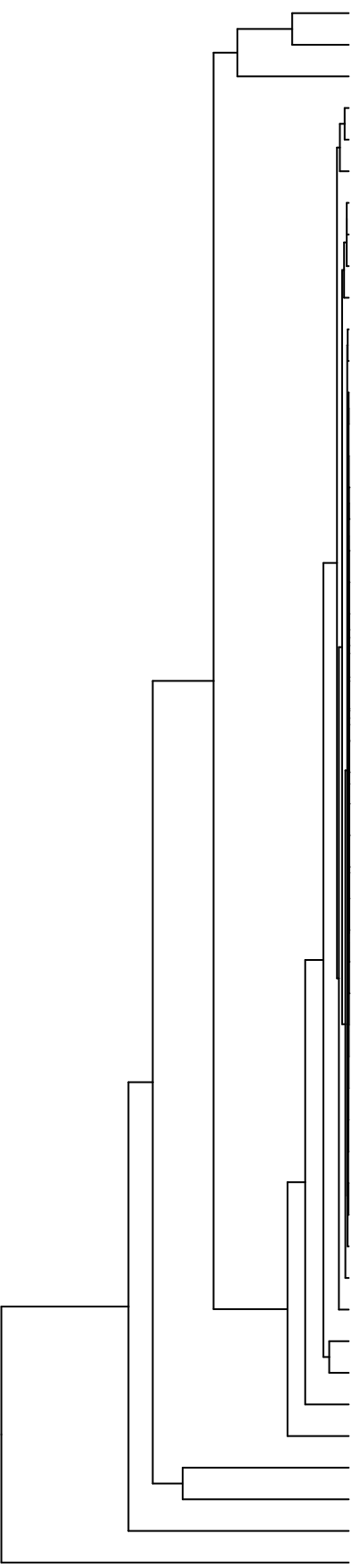


Group006
■ I Final -PMA
■ B Final -PMA



Veillonella
 Haemophilus
 Neisseria
 Aggregatibacter
 Eikenella
 Schaalia
 Campylobacter
 Leptotrichia
 Porphyromonas
 Gemella
 Actinomyces
 Prevotella
 Lancefieldella
 Catonella
 Saccharibacteria_(TM7)_[G-6]
 Cutibacterium
 Pseudomonas
 Phyllobacterium
 Agrobacterium
 Lachnospiraceae_[G-2]
 Acidovorax
 Serratia
 Novosphingobium
 Leifsonia
 Sphingobium
 Riemerella
 Microbacterium
 Siccationidurans
 Saccharibacteria_(TM7)_[G-5]
 Capnocytophaga
 Absconditabacteria_(SR1)_[G-1]
 Acinetobacter
 Oribacterium
 Saccharibacteria_(TM7)_[G-1]
 Lachnoanaerobaculum
 Lautropia
 Delftia
 Solobacterium
 Alloprevotella
 Stomatobaculum
 Staphylococcus
 Rothia
 Granulicatella
 Fusobacterium
 Raoultella
 Salmonella
 Klebsiella
 Enterobacter
 Streptococcus
 Citrobacter

F28914.S081
 F28914.S464
 F28914.S458
 F28914.S457
 F28914.S463
 F28914.S405
 F28914.S460
 F28914.S401
 F28914.S404
 F28914.S605
 F28914.S561
 F28914.S564
 F28914.S608
 F28914.S567
 F28914.S607
 F28914.S303
 F28914.S087
 F28914.S142
 F28914.S085
 F28914.S140
 F28914.S139
 F28914.S243
 F28914.S301
 F28914.S246
 F28914.S245
 F28914.S242
 F28914.S304
 F28914.S143
 F28914.S086

Genus

Samples